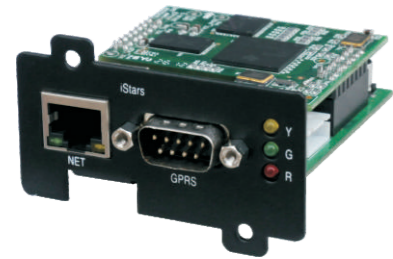
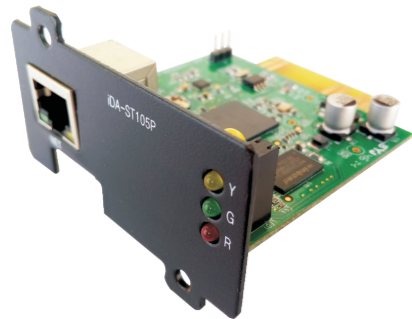


SNMP Card



iDA-ST100P



iDA-ST105P



External card

Product Introduction

SNMP card is the full authorized UPS network port, which keeps monitoring UPS operation status. The remote network monitor manages the query and control request, once it's certified, and then it will be transferred to UPS to operate. If there is any faults take place on the UPS, the monitor will sent alarm message to the appointed remote monitoring computer. SNMP card provides UPS with real-time network monitoring and management, which is able to check real time dynamic data, manage remote control and network management. The product can monitor stand-alone UPS, and achieve centralized monitoring with relative PC software.

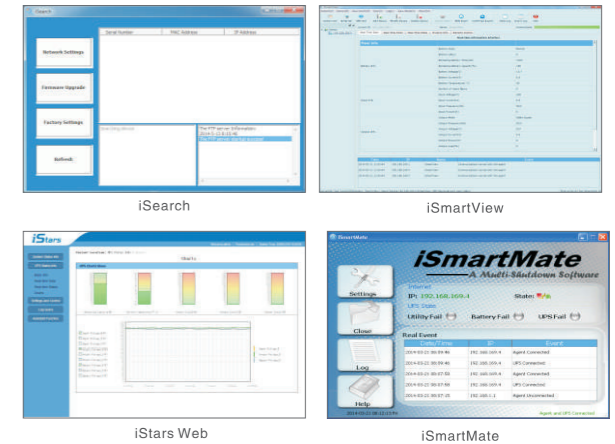
Features

- Various functions can be set and controlled through browser;
- Active alarm and report function;
- Support TCP/IP, SNMP, FTP, NTP, HTTP, SMTP etc agreement;
- Provide software upgrade configuration tool (iSearch software);
- Send daily statement through Email;
- When UPS has fault, it will send the message to manager through the SMS, SNMP, or Email etc;
- According to user requirements, GPRS SMS module can be attached for SMS alerts;
- Rack UPS can integrate up to four SNMP cards, adopts redundant double power supply for easy alignment;
- Support RFC1628;
- Support multi-type UPS manufacturers' protocols;

Technical Data

Model	iDA-ST100P	iDA-ST100E	iDA-ST105P
Name	Plug card	External card	Plug card
Communication Interface	RJ45, RS232	RJ45, RS232	RJ45
Network Interface	10/100Mbps High-speed Ethernet adaptive		
External GSM connected	Support	Support	No support
SNMP MIB	RFC1628		
Network protocol	TCP/IP, UDP, SNMP, SNT, HTTP, SMTP, DHCP, DNS, FTP, ARP, ICMP etc.		
LED Indicator	Power, Status, Fault, LAN 10/100M Link/Active		
Input power(DC)	9~24volt		
Power consumption	Max.1.5W		
Operating Environment	Temperature: 0° C ~ 50° C, Humanity: 10 ~ 90%		
Other device	Real-time system clock		
Hardware upgrade	FTP remote network upgrade		
Multi-Language	Support simplified Chinese, English etc.		
System Security	Offer IP-based filtering mechanism, and a user ID ,password protection for system operation and control management		

SNMP card includes iSearch search software, iSmartView monitoring software, and iSmartMate shutdown software. SNMP card provides very simple installation program, simply install the iSearch software that came with the product, with which search the IP address of SNMP card, then according to the IP address, you can log into iStars page in the web browser for further settings. SNMP card provides iSmartView, the lite version of many sets of UPS centralized monitoring software. With simple management, iSmartView supports multi-user privilege control, device management, real-time monitoring, static map display, remote control, data logging, other simple interactive features, and alarms between remote and local areas based on the results of monitoring and alerting. Equipped with SNMP card, shutdown software iSmartMate protects the user data security. With Windows and Linux versions, you can simply install iSmartMate shutdown software on the main computer, and set the IP address of SNMP card powered by UPS of this computer through network. When a failure happens to the UPS, a shutdown and sleep / standby command can be sent to the server, and the shutdown event can be automatically set up and saved in order to save the important document of the computer and ensure a safe shutdown and dormancy.



Application schematic diagram

